

Supporting information

Table 1_SI. Some features of River Serio and River Trebbia

	Length	Average flow rate	Basin extent	Altitude
R.Serio	124 km	40 m ³ /s	1256 km ²	From 2583 to 48 m a.s.l.
R.Trebbia	115 km	24 m ³ /s	1000 km ²	From 1406 to 60 m a.s.l.

Figure 1_SI. Characterisation of stressors on Serio River - number of agricultural enterprises in the 5 river segments.

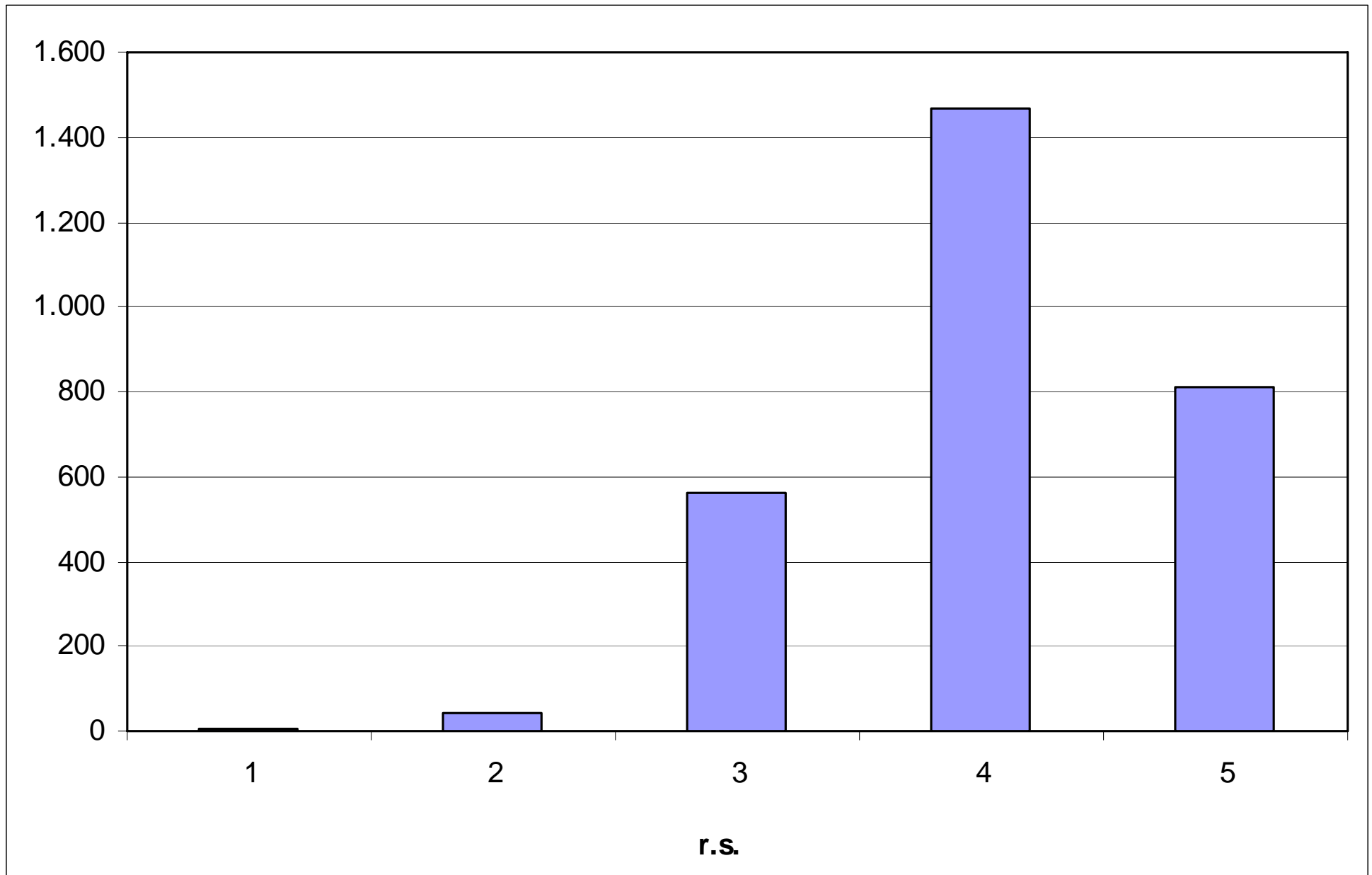
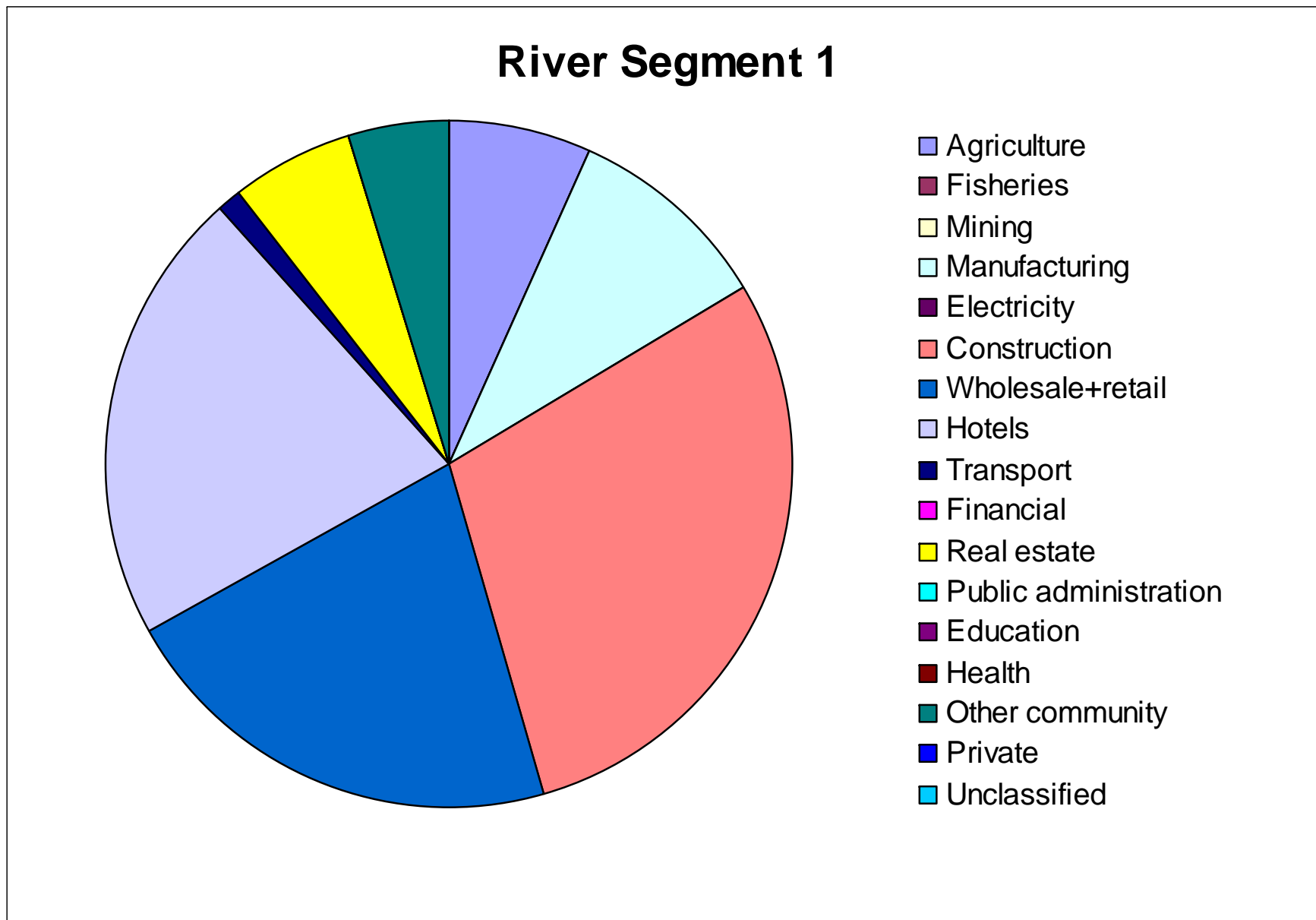


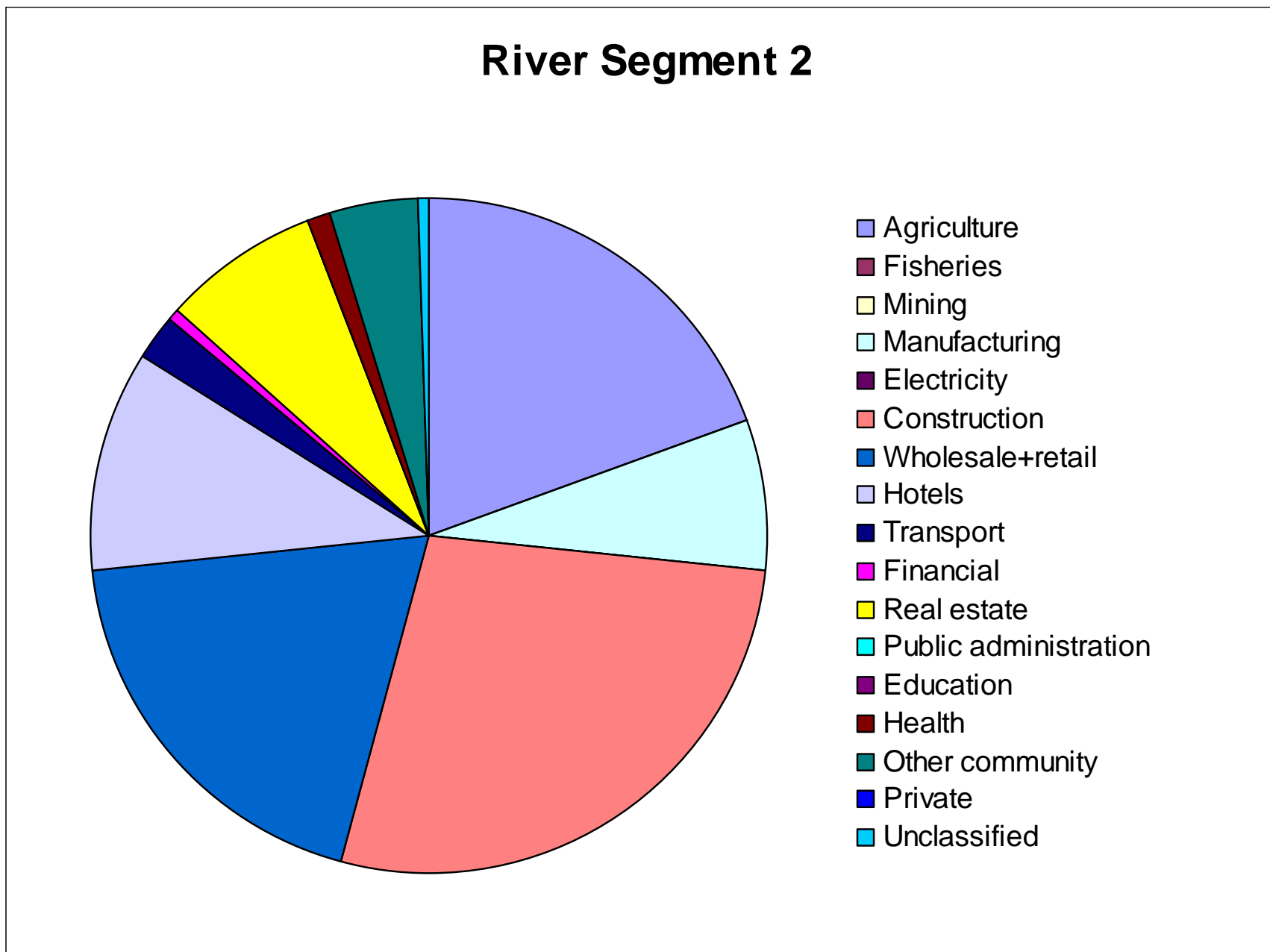
Figure 2_SI (a,b,c,d,e). Characterization of stressors on Serio River: distribution of enterprise typology according to national statistic categories on each river segment

(a)



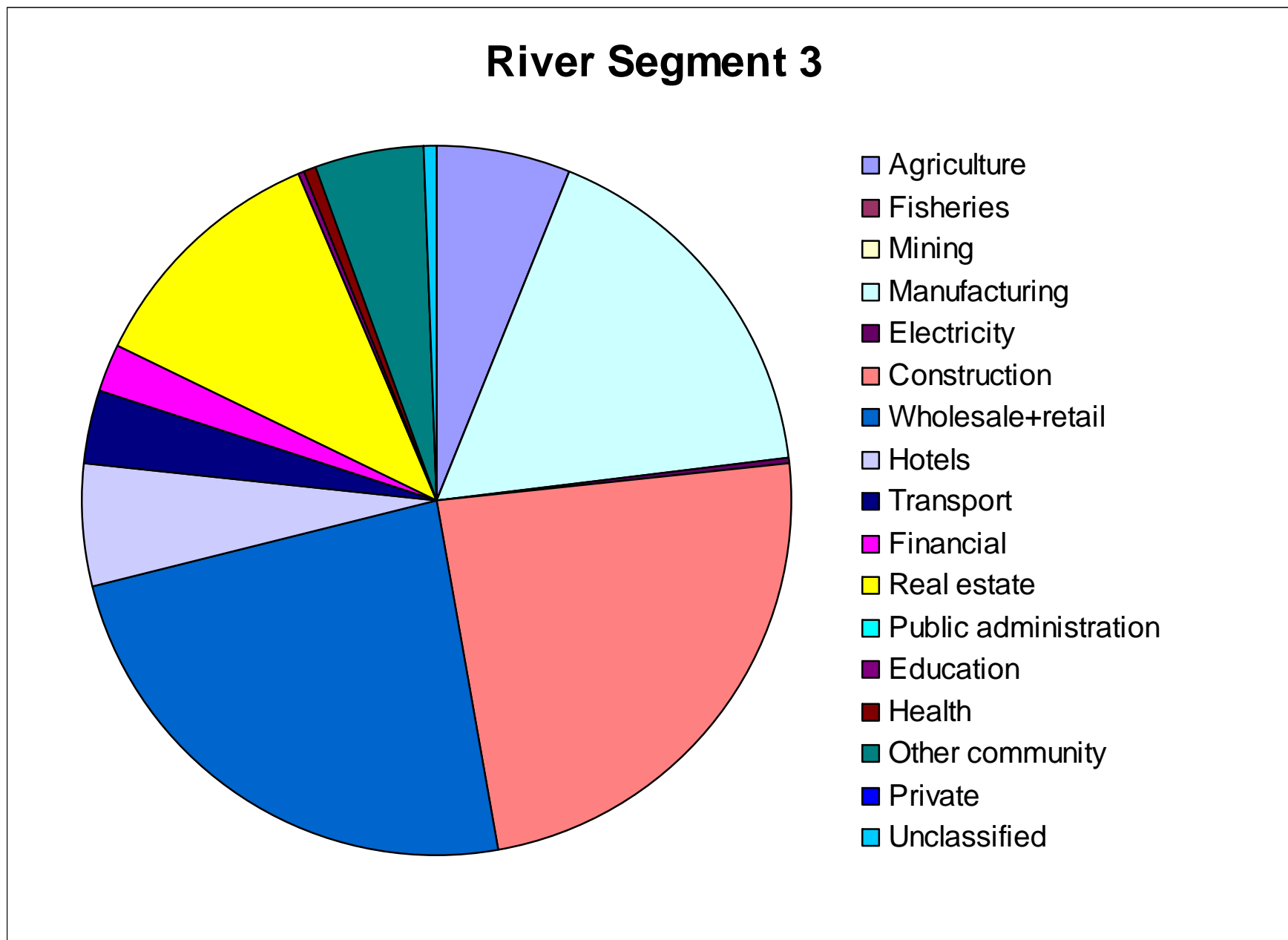
Source: Infocamere, 2009. Imprese attive presenti nel Registro delle Imprese al 31.12 per sezione di attività economica. Totale forme giuridiche. Comunale. Anno 2008. www.ring.lombardia.it/asnew/index.html (accessed July 2009)

(b)



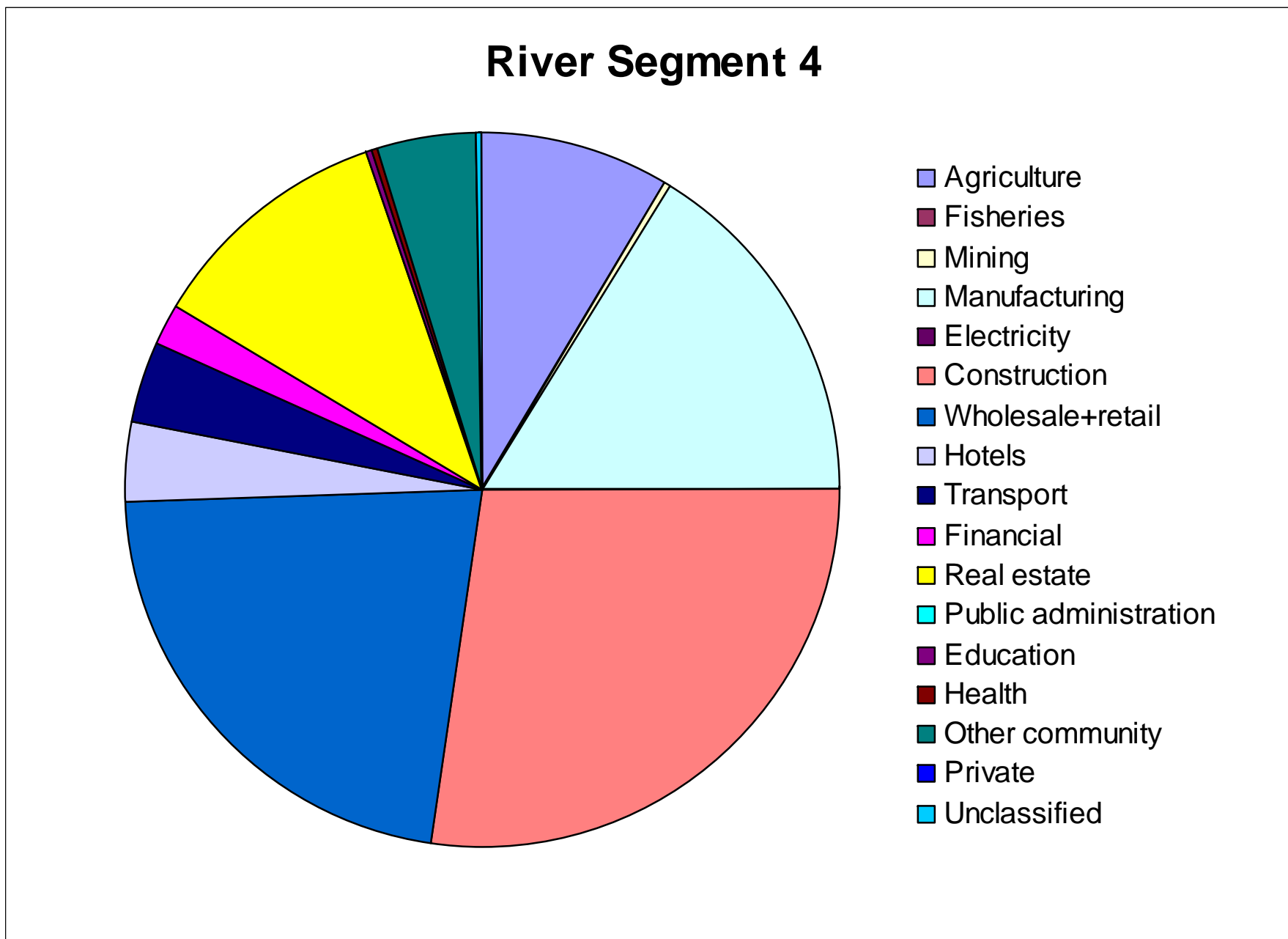
Source: Infocamere, 2009. Imprese attive presenti nel Registro delle Imprese al 31.12 per sezione di attività economica. Totale forme giuridiche. Comunale. Anno 2008. www.ring.lombardia.it/asrnew/index.html (accessed July 2009)

(c)



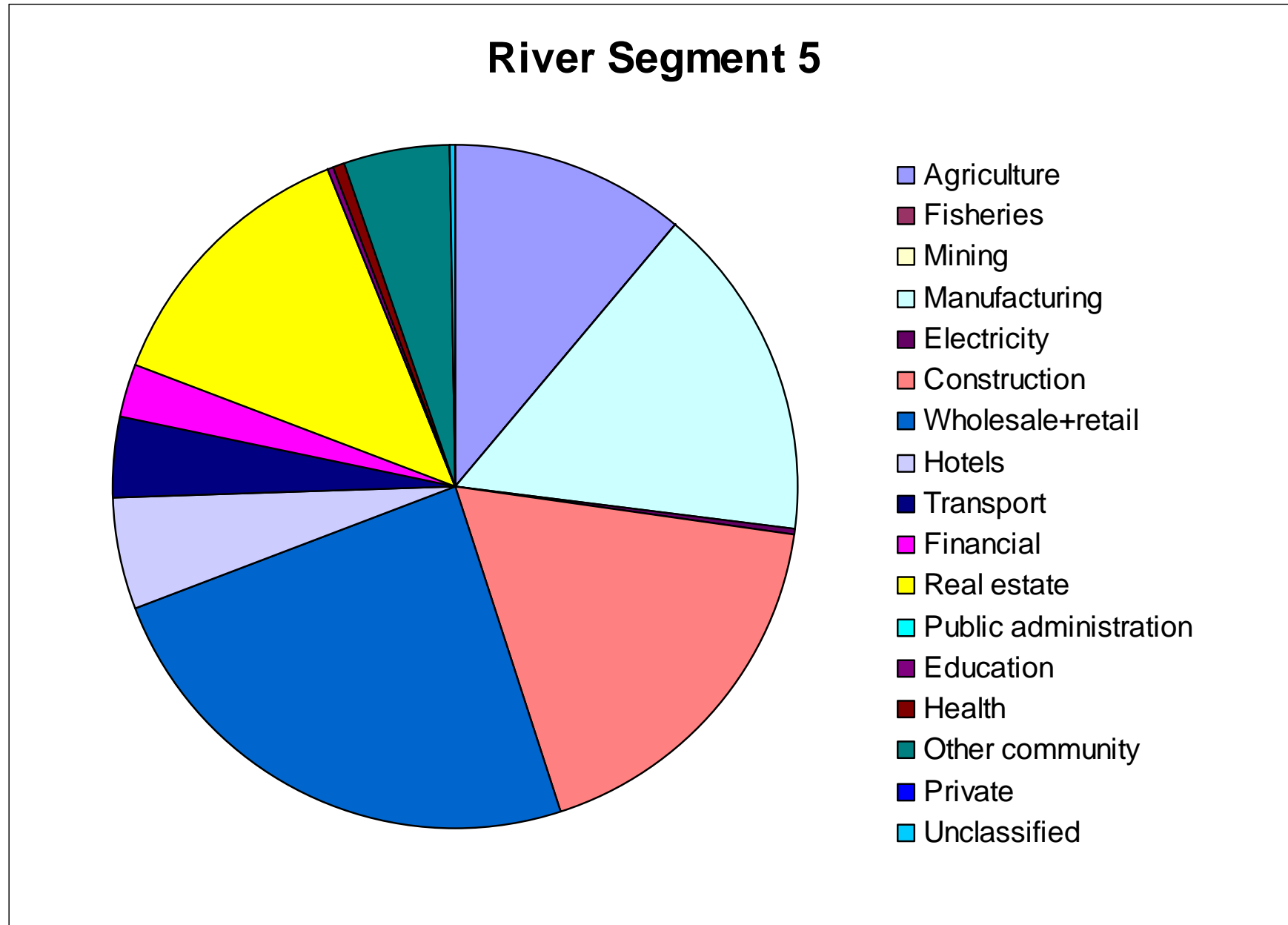
Source: Infocamere, 2009. Imprese attive presenti nel Registro delle Imprese al 31.12 per sezione di attività economica. Totale forme giuridiche. Comunale. Anno 2008. www.ring.lombardia.it/asnew/index.html (accessed July 2009)

(d)



Source: Infocamere, 2009. Imprese attive presenti nel Registro delle Imprese al 31.12 per sezione di attività economica. Totale forme giuridiche. Comunale. Anno 2008. www.ring.lombardia.it/asnew/index.html (accessed July 2009)

(e)



Source: Infocamere, 2009. Imprese attive presenti nel Registro delle Imprese al 31.12 per sezione di attività economica. Totale forme giuridiche. Comunale. Anno 2008. www.ring.lombardia.it/asnew/index.html (accessed July 2009)

Fig. 3_SI (a, b, c, d, e). Land use of watersheds referred to each river segment

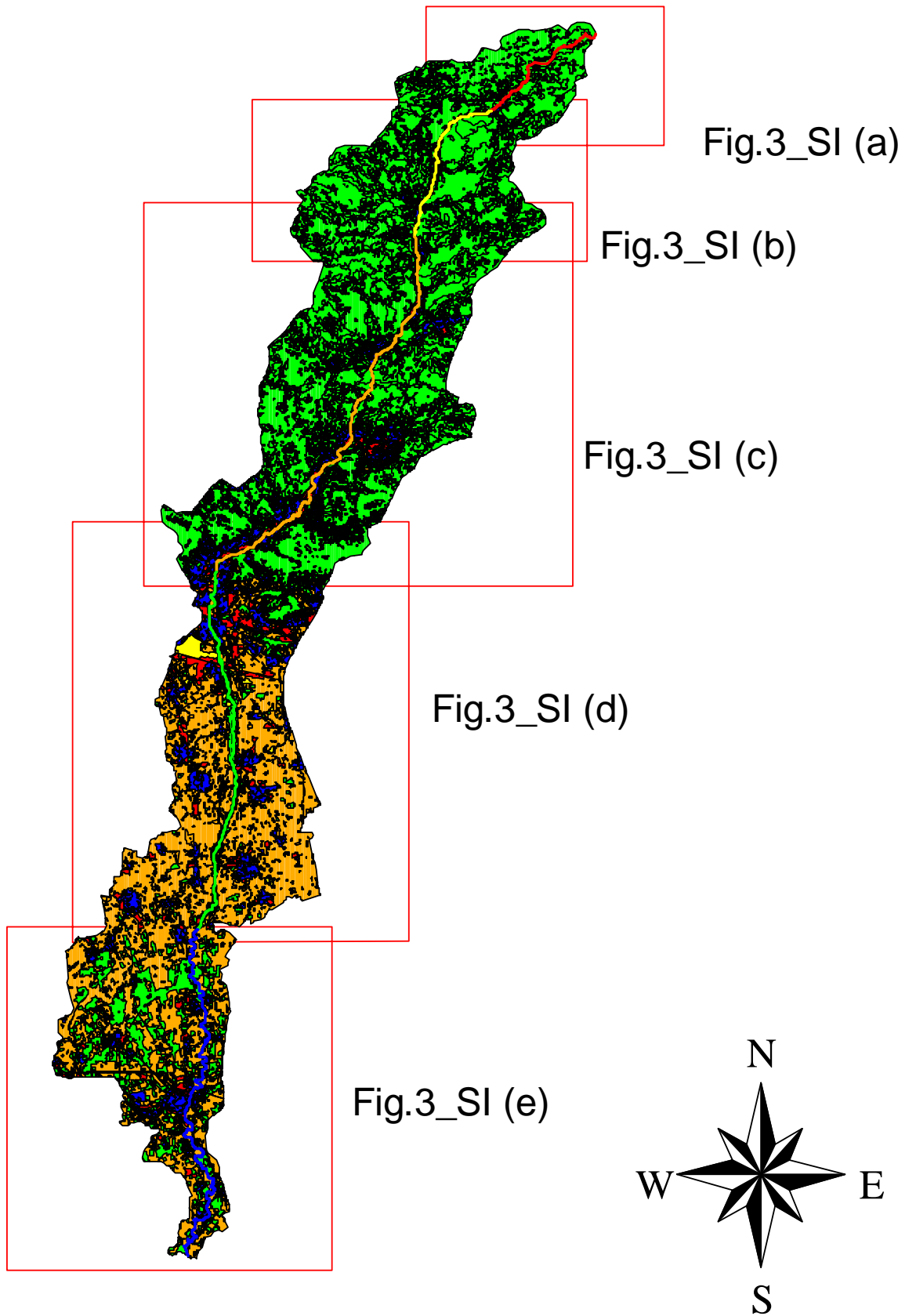


Fig. 3_SI (a). Land use of watershed referred to River Segment 1

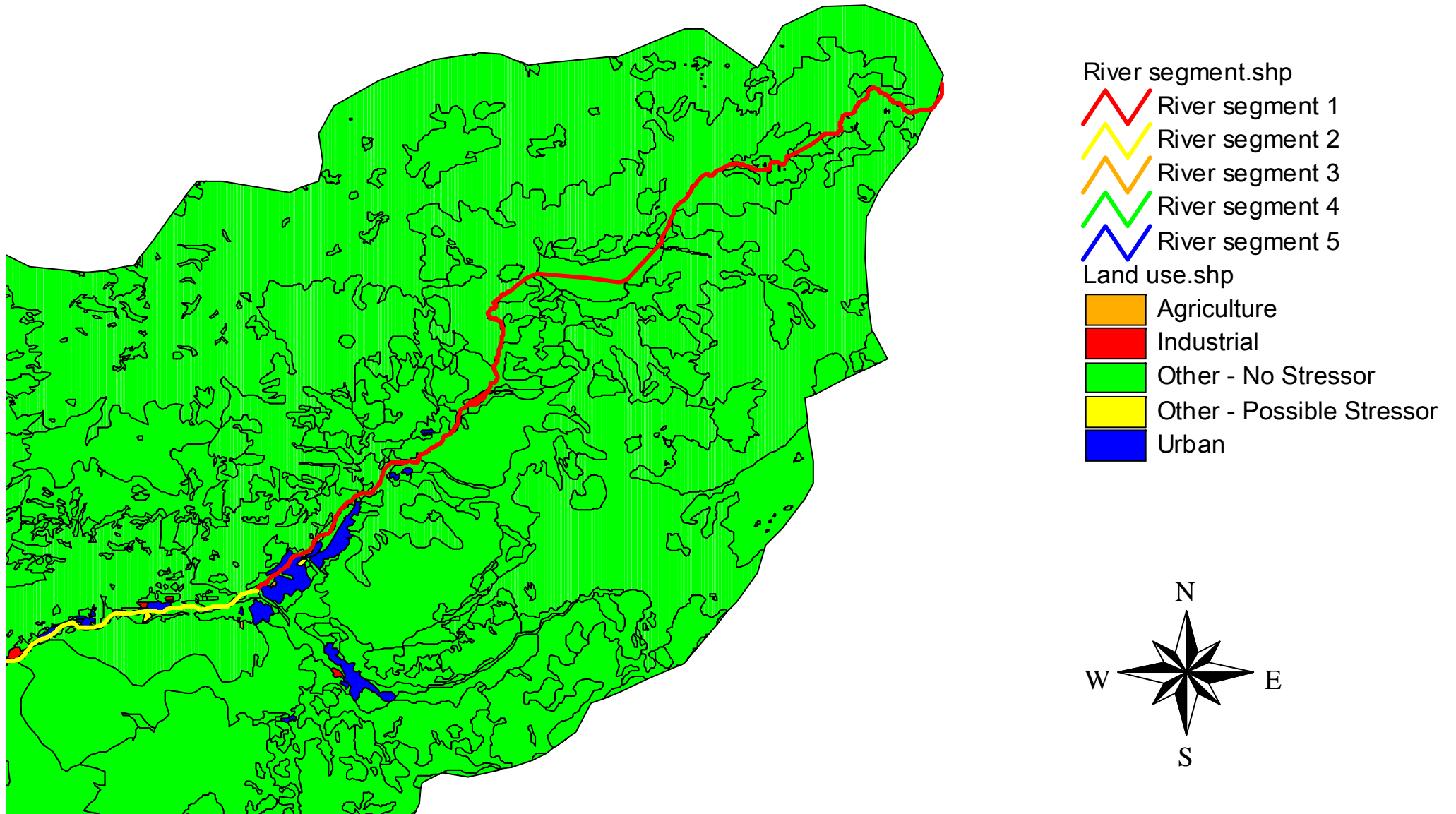


Fig. 3_SI (b). Land use of watershed referred to River Segment 2

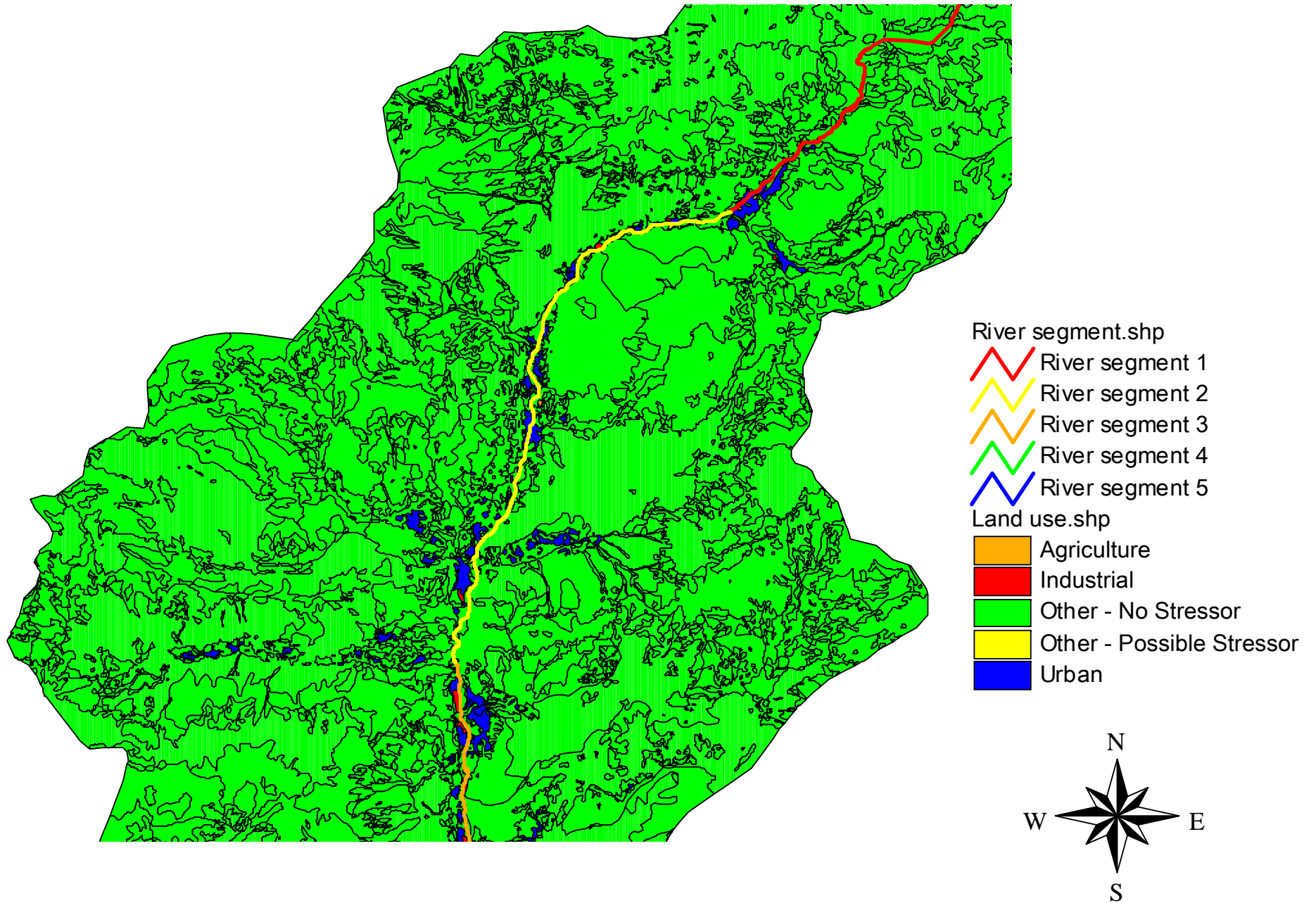












Fig. 3_SI (c). Land use of watershed referred to River Segment 3

River segment.shp

-  River segment 1
-  River segment 2
-  River segment 3
-  River segment 4
-  River segment 5

Land use.shp

-  Agriculture
-  Industrial
-  Other - No Stressor
-  Other - Possible Stressor
-  Urban

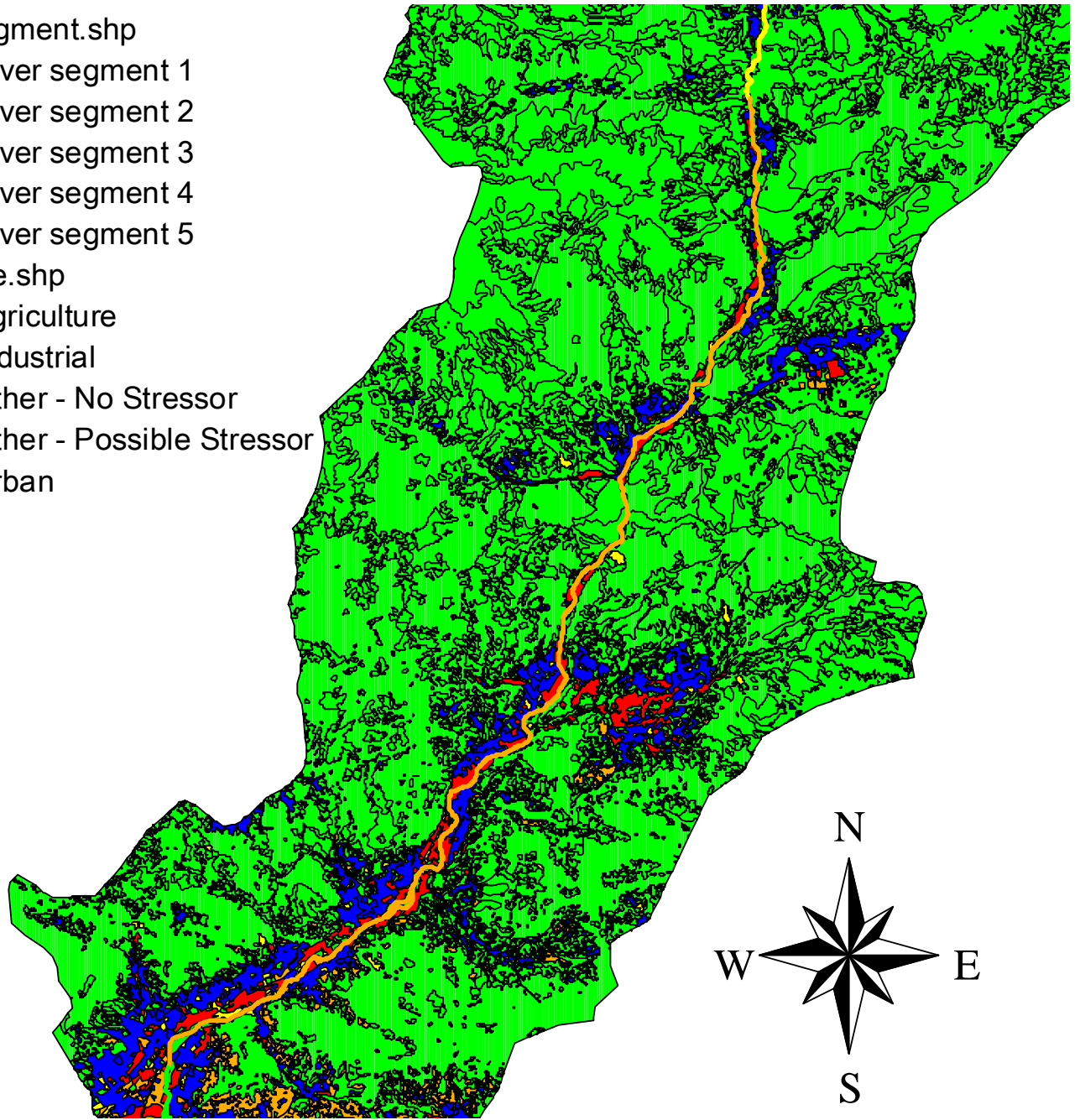












Fig. 3_SI (d). Land use of watershed referred to River Segment 4

River segment.shp

-  River segment 1
-  River segment 2
-  River segment 3
-  River segment 4
-  River segment 5

Land use.shp

-  Agriculture
-  Industrial
-  Other - No Stressor
-  Other - Possible Stressor
-  Urban

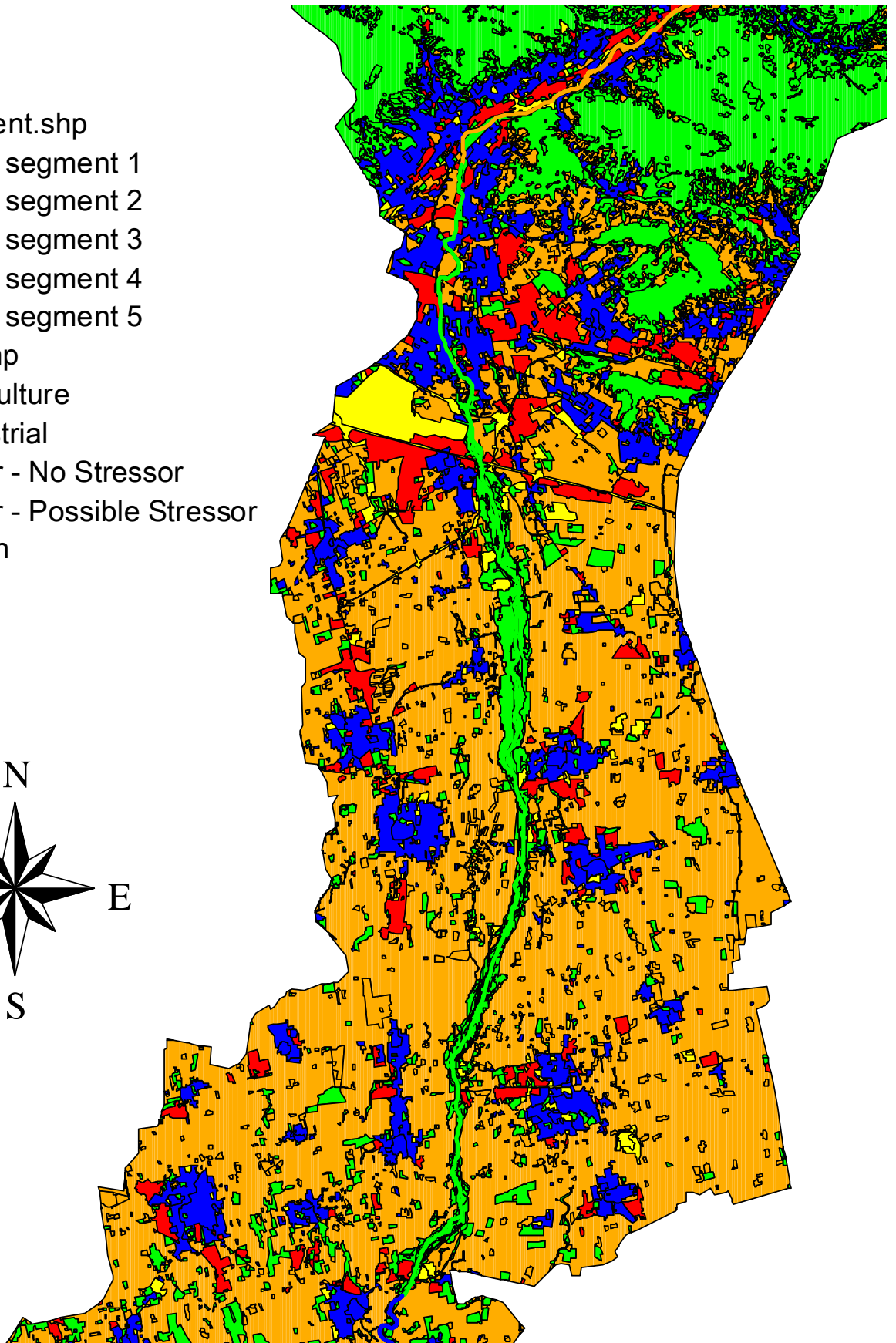
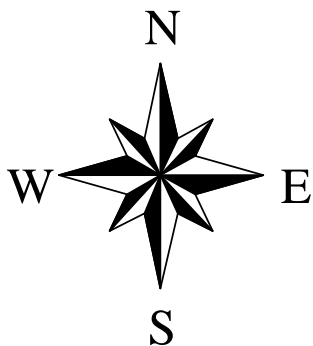


Fig. 3_SI (e). Land use of watershed referred to River Segment 5

