

HspB8 interacts with BAG3 in a “native-like” conformation forming a complex that displays chaperone-like activity

Barbara Sciandrone, Diletta Ami, Annalisa D’Urzo, Elena Angeli, Annalisa Relini, Marco Vanoni, Antonino Natalello, Maria Elena Regonesi

Supplementary Figure

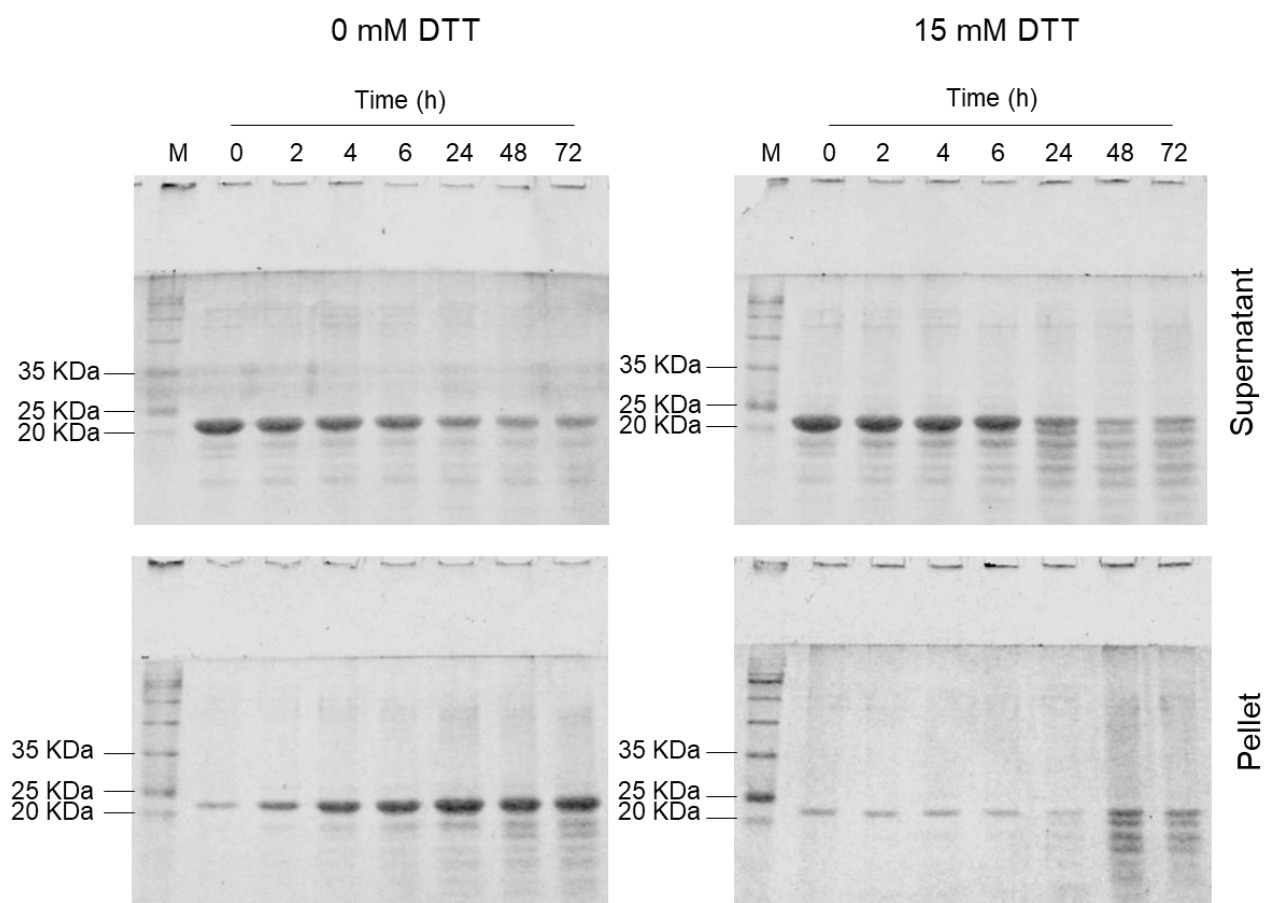


Figure S1: HspB8 solubility assay under reducing conditions. 20 μ M of freshly purified HspB8 was incubated at 37°C in PBS in the presence of protease inhibitors with or without DTT 15 mM. At different times (0, 2, 4, 6, 24, 48 and 72 hours), aliquots of 20 μ l were centrifuged and both supernatants and pellets were subjected to SDS-PAGE (14%). Gels were stained with EZBlue gel staining solution and scanned at 700 nm with Odyssey Fc System (LICOR).